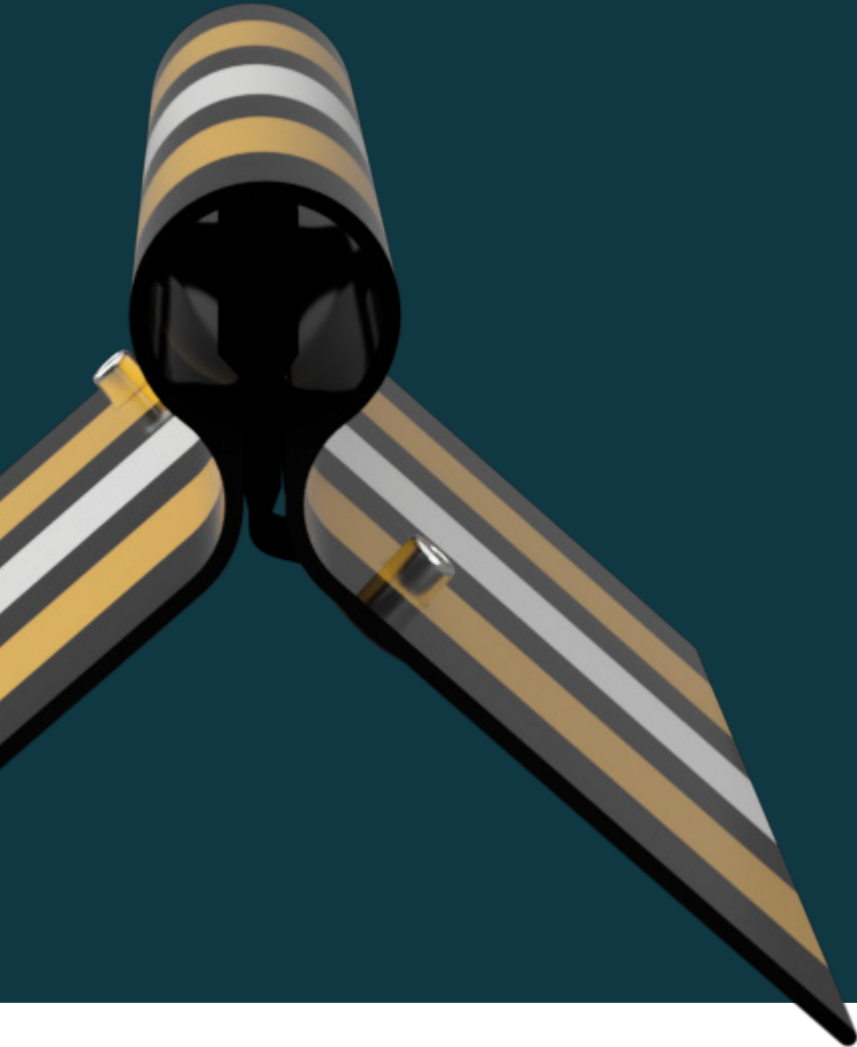




# Power Line Sentry

Sicame Group



**NETWORK PROTECTION FOR A RELIABLE GRID**

# NETWORK PROTECTION THROUGH WILDLIFE PROTECTION

## KEY FEATURES



V-O FLAME  
RETARDANT



QUICK + EASY  
INSTALLS



VERY HOTSTICK  
FRIENDLY



UNIVERSAL +  
ADJUSTABLE



DURABLE,  
TIGHT + SECURE



PROVEN TO BE  
EFFECTIVE

AT POWER LINE SENTRY WE KNOW THAT SECURING A RELIABLE ELECTRICAL GRID AND PROTECTING THE ENVIRONMENT ARE NOT MUTUALLY EXCLUSIVE.

IT'S WHY OUR SOLUTIONS ARE ROOTED IN COLLABORATIONS AMONG ELECTRICAL ENGINEERS, WILDLIFE BIOLOGISTS, ENVIRONMENTAL SPECIALISTS, AND OPERATIONS TEAMS; WHY WE INSIST ON RIGOROUS MATERIAL TESTING THAT SURPASSES INDUSTRY STANDARDS; AND WHY EVERY PRODUCT DELIVERS SUPERIOR COVERAGE, DURABILITY, AND EFFECTIVENESS.

BECAUSE OUR PRODUCTS ARE USED AT THIS INTERSECTING POINT BETWEEN THE GRID AND THE ENVIRONMENT WE FEEL IT IS OUR RESPONSIBILITY TO PROVIDE A SAFE INTERACTION FOR BOTH SIDES. OUR APPROACH EMBODIES THIS UNDERSTANDING AND OUR SOLUTIONS REFLECT IT.

# PRODUCT GUIDE

## COLLISION PREVENTION

3-4 HAWK EYE™ BIRD FLIGHT DIVERTERS 


5-6 PHASE MARKERS 

## INSULATION

7-8 RIP STOP™ INSULATING LINE HOSE 

9-10 ENVIROGUARD™ INSULATING LINE PROTECTOR 

11-12 FUSING INSULATION TAPE 

13-14 EQUIPMENT + BUSHING COVERS 

15-16 CUTOUT COVERS 

17-20 INSULATOR / CONDUCTOR COVERS 

21-22 WOODPECKER + SQUIRREL DETERRING POLE WRAP 

## PERCHING PREVENTION

23-24 RAPTOR GUARD™ “X” 

25-26 RAPTOR GUARD™ SPIKES 

27-28 RAPTOR GUARD™ POLE TOP CAPS 

## NESTING PREVENTION

29-30 NEST DIVERTERS 

31-32 NEST PLATFORMS 

## BANDING

33-34 SUPER STRAP POLYMER BANDING 

# HAWK EYE™ BIRD FLIGHT DIVERTERS



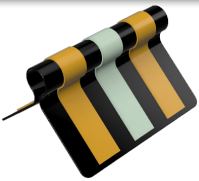
PATENT # 8,438,998 B2



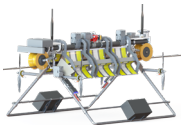
SHAPE AND DESIGN SUPPORT RESEARCH PROVING THAT VISIBILITY IN LOW LIGHT IS THE MOST IMPORTANT ASPECT IN PREVENTING AVIAN COLLISIONS.



## LARGEST SURFACE AREA OF REFLECTIVE MATERIAL IN THE INDUSTRY



INSIDE VIEW



LINEFLY™ INSTALLATION ROBOT

FLUORESCENT PRISMATIC YELLOW IS MIRRORED TO EFFECTIVELY REFLECT LIGHT

24-HOUR GLOW-IN-THE-DARK

A-FRAME SHAPE PROVIDES MAXIMUM VISIBILITY FROM ALL ANGLES

DURABLE RUBBER HOSE CRADLES WIRE, DOES NOT DAMAGE OPGW

NO MECHANICAL COMPONENTS TO POTENTIALLY FAIL

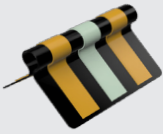
RATED FOR SYSTEMS UP TO 345 KV

EASY HOTSTICK INSTALL

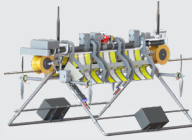
QUICK, SAFE, EFFICIENT ROBOT/DRONE INSTALL OPTION

VIDEOS + MORE





HAWK EYE™  
BIRD FLIGHT DIVERTER  
BFD-050



HAWK EYE™  
LINEFLY™  
INSTALLATION ROBOT



HOT STICK  
INSTALLATION TOOL  
BFD-AT-050-100

SKU	LENGTH	HEIGHT	SYSTEM KV	WIRE FITMENT	MIN QTY
BFD-050	6" / 15.24 CM	3" / 7.62 CM	≤ 345 KV	#4 - 300 + OPGW	50
BFD-075	6" / 15.24 CM	4" / 10.16 CM	≤ 345 KV	336 - 795 MCM	50
BFD-075-HV	6" / 15.24 CM	4" / 10.16 CM	≤ 345 KV	336 - 795 MCM	50
BFD-150	6" / 15.24 CM	5" / 12.7 CM	≤ 345 KV	850 - 1780 MCM	50
BFD-150-HV	6" / 15.24 CM	5" / 12.7 CM	≤ 345 KV	850 - 1780 MCM	50
BFD-051 / GUY WIRE MARKER *	6" / 15.24 CM	3" / 7.62 CM	≤ 345 KV	#4 - 300 + OPGW	50
BFD-076 / GUY WIRE MARKER *	6" / 15.24 CM	4" / 10.16 CM	≤ 345 KV	336 - 795 MCM	50

\* GUY WIRE MARKER INCLUDES RETENTION CLIP

#### TOOLS

BFD-AT-050-075	HOTSTICK COMPATIBLE INSTALLATION TOOL FOR BFD-050 AND BFD-075
BFD-AT-150	HOTSTICK COMPATIBLE INSTALLATION TOOL FOR BFD-150

TESTS	RESULTS
UL 94 // FLAMMABILITY OF PLASTIC MATERIALS	V-0 / 5VA (UL FILE NUMBER: E175765)
IEEE 1656 5.6 /ASTM 4329/ASTM G-154 UV AGING	3,000 HOURS
ASTM D-638 / D-1822 // TENSILE STRENGTH @ YIELD	900 PSI (62.1 MPA)
ASTM D-256 / NOTCHED IZOD IMPACT	12.5 FT-LB/IN (670 J/M)
ASTM D648 / DEFLECTION TEMPERATURE UNDER LOAD @ 66 PSI	270 F / 132 C
24 HOUR PHOTO LUMINESCENT - COMPLIANCE	DIN 67510, ASTM 2072, PSPA Class A/B/C/D, APTA SS-PS-004-99 Rev 2/3, ICC 2009/201202015 IBC/IFC, UL 1994
REGULATORY	ROHS COMPLIANT

CONCENTRATED LOAD DATA FOR PLS-CADD AVAILABLE UPON REQUEST  
WIND AND ICE LOAD DATA AVAILABLE UPON REQUEST

# PHASE MARKERS



PHASE MARKERS ARE USED FOR IDENTIFICATION AND CAN BE CUSTOMIZED WITH NUMBERS, LETTERS, LOGOS, ETC.

  
V-0  
FLAME  
RETARDANT

  
VERY  
HOTSTICK  
FRIENDLY

  
RATED FOR  
SYSTEMS  
≤ 345 KV

## REUSABLE + CUSTOMIZABLE



SNAP FIT DESIGN ELIMINATES EXTRA HARDWARE

REUSABLE MARKERS IDENTIFY INDIVIDUAL PHASES DURING CONSTRUCTION AND MAINTENANCE

DURABLE RUBBER HOSE CRADLES WIRE, DOES NOT SLIP OR CAUSE DAMAGE

OPTION TO CUSTOMIZE SETS WITH LOGOS, ETC.

VIDEOS +  
MORE





PHASE MARKER  
SET OF 3  
BFD-050-3S-ABC



HOT STICK  
INSTALLATION TOOL  
BFD-AT-050-100

SKU	LENGTH	HEIGHT	SYSTEM KV	WIRE FITMENT	MIN QTY
BFD-050-3S-ABC	3" / 7.62 CM	3" / 7.62 CM	≤ 345 KV	#4 - 300 + OPGW	10
BFD-075-3S-ABC	3" / 7.62 CM	4" / 10.16 CM	≤ 345 KV	336 - 795 MCM	10

#### TOOL

BFD-AT-050-075	HOTSTICK COMPATIBLE INSTALLATION TOOL FOR BFD-050-3S-ABC AND BFD-075-3S-ABC
----------------	---

TESTS	RESULTS
UL 94 // FLAMMABILITY OF PLASTIC MATERIALS	V-0 / 5VA (UL FILE NUMBER: E175765)
IEEE 1656 5.6 /ASTM 4329/ASTM G-154 UV AGING	3,000 HOURS
ASTM D-638 / D-1822 // TENSILE STRENGTH @ YIELD	900 PSI (62.1 MPA)
ASTM D-256 / NOTCHED IZOD IMPACT	12.5 FT-LB/IN (670 J/M)
ASTM D648 / DEFLECTION TEMPERATURE UNDER LOAD @ 66 PSI	270 F / 132 C
24 HOUR PHOTO LUMINESCENT - COMPLIANCE	DIN 67510, ASTM 2072, PSPA Class A/B/C/D, APTA SS-PS-004-99 Rev 2/3, ICC 2009/201202015 IBC/IFC, UL 1994
REGULATORY	ROHS COMPLIANT

# RIP-STOP™ INSULATING LINE HOSE



LINE HOSE PREVENTS ELECTROCUTIONS BY INSULATING DANGEROUS ENERGIZED AREAS. IT CAN BE USED ON ANY BARE OR NON-INSULATED AREA OR WIRE TO ADD 35KV PROTECTION.



ONLY TEAR RESISTANT LINE HOSE IN THE INDUSTRY



RIP STOP™ TEAR RESISTANT VULCANIZED SILICONE - ONLY ONE OF ITS KIND IN THE INDUSTRY

BEST IN CLASS SILICONE - WILL NOT DETERIORATE OR GET HARD

STAYS EASILY PLIABLE IN ALL WEATHER CONDITIONS // -40 C TO 175 C OPERATING TEMPERATURES

50% OVERLAP ENSURES SUPERIOR COVERAGE

EASY HOTSTICK OR GLOVE INSTALL

50% OVERLAP

VIDEOS +  
MORE







RIP STOP™  
INSULATING LINE HOSE  
LH-100-25



HOT STICK  
INSTALLATION TOOL  
LHT-100-125

SKU	LENGTH	I.D.	SYSTEM KV	ACSR RANGE	CONDUCTOR RANGE
LH-038-50	50' / 15.24 M	3/8" / .95 CM	35 KV	#6 - 2/0 ACSR	0.175" - .5" / .44 CM - 1.27 CM
LH-038-50-KT *	50' / 15.24 M	3/8" / .95 CM	35 KV	#6 - 2/0 ACSR	0.175" - .5" / .44 CM - 1.27 CM
LH-063-50	50' / 15.24 M	5/8" / 1.59 CM	35 KV	1/0 - 336 ACSR	.375" - .7" / .95 CM - 1.78 CM
LH-063-50-KT *	50' / 15.24 M	5/8" / 1.59 CM	35 KV	1/0 - 366 ACSR	.375" - .7" / .95 CM - 1.78 CM
LH-075-50	50' / 15.24 M	3/4" / 1.91 CM	35 KV	266 - 477 ACSR	.6" - .9" / 1.52 CM - 2.29 CM
LH-075-50-KT *	50' / 15.24 M	3/4" / 1.91 CM	35 KV	266 - 477 ACSR	.6" - .9" / 1.52 CM - 2.29 CM
LH-100-25	25' / 7.62 M	1" / 2.54 CM	35 KV	397 - 715 ACSR	.74" - 1.1" / 1.88 CM - 2.8 CM
LH-100-25-KT *	25' / 7.62 M	1" / 2.54 CM	35 KV	397 - 715 ACSR	.74" - 1.1" / 1.88 CM - 2.8 CM
LH-125-25	25' / 7.62 M	1 1/4" / 3.18 CM	35 KV	715 - 1192 ACSR	1" - 1.35" / 2.54 CM - 3.43 CM
LH-125-25-KT *	25' / 7.62 M	1 1/4" / 3.18 CM	35 KV	715 - 1192 ACSR	1" - 1.35" / 2.54 CM - 3.43 CM
LH-150-25	25' / 7.62 M	1 1/2" / 3.81 CM	35 KV	1193 - 1780 ACSR	1.3" - 1.6" / 3.3 CM - 4.06 CM

\* KITS INCLUDE INSTALLATION TOOL

#### TOOLS

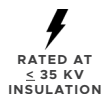
LHT-038	HOTSTICK COMPATIBLE INSTALLATION TOOL FOR LH-038
LHT-038-R	HOTSTICK COMPATIBLE INSTALLATION TOOL SET FOR FULL SPAN INSTALLATION OF LH-038 ROLLS
LHT-063-075	HOTSTICK COMPATIBLE INSTALLATION TOOL FOR LH-063 AND LH-075
LHT-100-125	HOTSTICK COMPATIBLE INSTALLATION TOOL FOR LH-100 AND LH-125
LHT-150	HOTSTICK COMPATIBLE INSTALLATION TOOL FOR LH-150

#### TESTS

TESTS	RESULTS
IEEE 1656 / 5.2 WET WITHSTAND	>20KV
TEAR STRENGTH	46.5 KN/M
ASTM D257-14 VOLUME RESISTIVITY	5.20X10 <sup>16</sup> OHMS/CM
ASTM D257-14 SURFACE RESISTANCE	1.61X10 <sup>12</sup> OHMS
ASTM D257-14 INSULATION RESISTANCE	2.94X10 <sup>12</sup> OHMS
ISO 37:2017 ELONGATION AT BREAK	414%
ISO 7619-1:2010 SHORE HARDNESS	62 SHORE A
ASTM D573-04 HEAT RESISTANCE	200C / 72 HRS 414% ELONGATION, 65 SHORE A
IEEE 1656 / 5.6 ULTRAVIOLET AGING / ASTM G-155	1,000 HRS
UL 94 FLAMMABILITY OF PLASTIC MATERIALS	V-0
ASTM D149 DIELECTRIC STRENGTH	287 V/MIL (11.3 KV/MM)
ASTM D 3638 COMPARATIVE TRACKING INDEX	526 V
ASTM D150-18 DIELECTRIC CONSTANT & DISSIPATION FACTOR	2.96 // 0.004
ISO 812 BRITTLINESS TEMPERATURE	>-94F (-70C)

# ENVIROGUARD™ LINE PROTECTOR

HIGH VISIBILITY LINE HOSE PROVIDES INSULATION AND PROTECTION FROM ADVERSE ENVIRONMENTAL CONDITIONS INCLUDING TREES, WEATHER, AND WILDLIFE.



ONLY TEAR RESISTANT LINE HOSE IN THE INDUSTRY



RIP STOP™ TEAR RESISTANT VULCANIZED SILICONE - ONLY ONE OF ITS KIND IN THE INDUSTRY

HIGH VISIBILITY DESIGN

BEST IN CLASS SILICONE - WILL NOT DETERIORATE OR GET HARD

STAYS EASILY PLIABLE IN ALL WEATHER CONDITIONS // -40 C TO 175 C OPERATING TEMPERATURES

50% OVERLAP ENSURES SUPERIOR COVERAGE

COMES PRECUT TO 12 FEET (3.67 METERS) // EASILY TRIMMED AS NEEDED

EASY HOTSTICK OR GLOVE INSTALL

**NOTE: NOT FOR HUMAN PROTECTION**

VIDEOS +  
MORE





ENVIROGUARD™  
INSULATING LINE PROTECTOR  
EG-100-ORG-12



HOT STICK  
INSTALLATION TOOL  
LHT-100-125

SKU	COLOR	LENGTH	I.D.	SYSTEM KV	CONDUCTOR RANGE	CONDUCTOR RANGE
EG-075-ORG-12	ORANGE	12' / 3.36 M	3/4" / 1.91 CM	35 KV	266 - 477 ACSR	.6" - .9" / 1.52 CM - 2.29 CM
EG-100-ORG-12	ORANGE	12' / 3.36 M	1" / 2.54 CM	35 KV	397 - 715 ACSR	.74" - 1.1" / 1.88 CM - 2.8 CM
EG-125-ORG-12	ORANGE	12' / 3.36 M	1 1/4" / 3.17 CM	35 KV	715 - 1192 ACSR	1" - 1.35" / 2.54 CM - 3.43 CM
EG-075-YWL-12	YELLOW	12' / 3.36 M	3/4" / 1.91 CM	35 KV	266 - 477 ACSR	.6" - .9" / 1.52 CM - 2.29 CM
EG-100-YWL-12	YELLOW	12' / 3.36 M	1" / 2.54 CM	35 KV	397 - 715 ACSR	.74" - 1.1" / 1.88 CM - 2.8 CM
EG-125-YWL-12	YELLOW	12' / 3.36 M	1 1/4" / 3.17 CM	35 KV	715 - 1192 ACSR	1" - 1.35" / 2.54 CM - 3.43 CM

\*INCLUDES 6 HIGH STRENGTH NYLON UV RESISTANT BAR LOCK TIES

#### TOOLS

LHT-063-075	HOTSTICK COMPATIBLE INSTALLATION TOOL FOR EG-075-ORG-12
LHT-100-125	HOTSTICK COMPATIBLE INSTALLATION TOOL FOR EG-100-ORG-12 AND EG-125-ORG-12

#### TESTS

#### RESULTS

IEEE 1656 / 5.2 WET WITHSTAND	>20KV
TEAR STRENGTH	46.5 KN/M
ASTM D257-14 VOLUME RESISTIVITY	5.20X10 <sup>16</sup> OHMS/CM
ASTM D257-14 SURFACE RESISTANCE	1.61X10 <sup>12</sup> OHMS
ASTM D257-14 INSULATION RESISTANCE	2.94X10 <sup>12</sup> OHMS
ISO 37:2017 ELONGATION AT BREAK	414%
ISO 7619-1:2010 SHORE HARDNESS	62 SHORE A
ASTM D573-04 HEAT RESISTANCE	200C / 72 HRS 414% ELONGATION, 65 SHORE A
IEEE 1656 / 5.6 ULTRAVIOLET AGING / ASTM G-155	1,000 HRS
UL 94 FLAMMABILITY OF PLASTIC MATERIALS	V-0
ASTM D149 DIELECTRIC STRENGTH	287 V/MIL (11.3 KV/MM)
ASTM D 3638 COMPARATIVE TRACKING INDEX	526 V
ASTM D150-18 DIELECTRIC CONSTANT & DISSIPATION FACTOR	2.96 // 0.004
ISO 812 BRITTLINESS TEMPERATURE	>-94F (-70C)

# FUSING INSULATION TAPE



FUSING TAPE PROVIDES AN IRREVERSIBLE BOND THAT IS RESISTANT TO MOISTURE, OXYGEN, OZONE, UV, AND CORONA OVER A WIDE TEMPERATURE RANGE.



SELF FUSES TO SEAL

PROVIDES IRREVERSIBLE BOND, BUT BONDS ONLY TO ITSELF

WILL NOT TEAR ONCE SEALED

PROTECTS OVER A WIDE TEMPERATURE RANGE

INSULATION BARRIER IS RESISTANT TO MOISTURE, OXYGEN, OZONE, UV, AND CORONA

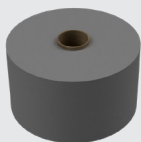
≥15KV PHASE-TO-GROUND INSULATION RATING PER LAYER WHEN INSTALLED WITH 2/3 OVERLAP AND 10% STRETCH

≥69KV INSULATION AVAILABLE WITH ADDITIONAL LAYERS

2" X 36' ROLL

VIDEOS+  
MORE





FUSING  
INSULATION TAPE  
FTP-200

SKU	LENGTH	WIDTH	SYSTEM KV
FTP-200	36' / 10.97 M	2" / .05 CM	15 KV PER LAYER WITH PROPER INSTALLATION

TESTS	RESULTS
ASTM D142 ELONGATION AT BREAK	500%
ASTM D149 DIELECTRIC STRENGTH	684 V/MIL (26.9 KV/MM)
ASTM D142 TENSILE STRENGTH	1458 PSI (10053 KV/MM)
TEMPERATURE RANGE	-60 F - 400 F (-51 C - 204 C)

# UNIVERSAL / ADJUSTABLE BUSHING + EQUIPMENT

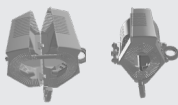
PATENT # 9646743



EQUIPMENT COVERS INSULATE CONNECTION POINTS BETWEEN THE CONDUCTOR AND THE EQUIPMENT TO PREVENT ELECTROCUTION EVENTS AND POWER OUTAGES.



## ADJUSTS TO FIT



OPEN VS. CLOSED CLAM SHELL DESIGN

ONLY ADJUSTABLE COVER IN THE INDUSTRY

> SMALL COVER FITS SHEDS UP TO 4" WIDE X 6" TALL TO FIT MOST TRANSFORMER BUSHINGS

> MEDIUM COVER FITS SHEDS UP TO 5.5" WIDE X 8" TALL TO FIT MOST RECLOSERS AND REGULATORS

CLAM SHELL DESIGN ADJUSTS TO THE SIZE OF THE EQUIPMENT FOR A TIGHT AND SECURE UNIVERSAL FIT

NO-WEAR HINGES

MULTIPLE ENTRY/EXIT OPTIONS

FULL TOPSIDE CLOSURE FOR SUPERIOR SALT, AIR POLLUTION, OZONE, DUST, AND OTHER CONTAMINATE PROTECTION

MULTIPLE HOTSTICK ATTACHMENT POINTS

EASY HOTSTICK INSTALL - NO LOCKING PINS

SMALL COVER IS INFRARED FRIENDLY

VIDEOS + MORE





MEDIUM  
EQUIPMENT COVER  
BC-D02



SMALL  
EQUIPMENT COVER  
BC-D01

SKU	SHED DIAMETER	ROD DIAMETER	HEIGHT	QTY
BC-D01	≤ 4" / 10.16 CM	≤ 2.5" / 6.35 CM	≤ 6"	20
BC-D02	≤ 5.5" / 13.97 CM	≤ 3" / 7.62 CM	≤ 8"	20

TESTS	RESULTS
IEEE 1656 / 5.2 WET WITHSTAND	>18 KV
IEEE 1656 / 5.6 ULTRAVIOLET AGING	5,000 HOURS
UL 94 FLAMMABILITY OF PLASTIC MATERIALS	V-0
PROPERTIES	RESULTS
ASTM D149 DIELECTRIC STRENGTH	467 V/MIL (18.4 KV/MM)
ASTM D2303 INCLINED PLANE TRACKING AND EROSION: INITIAL TRACKING (VARIABLE VOLTAGE)	4.0 KV
ASTM D638 TENSILE STRENGTH @ YIELD	2,400 PSI (17 MPA)
ASTM D790 FLEXURAL MODULUS	140,000 PSI (966 MPA)
REGULATORY	ROHS COMPLIANT

# UNIVERSAL / ADJUSTABLE CUTOUT COVERS



CUTOUT COVERS INSULATE EXPOSED PORTIONS OF CUTOUT EQUIPMENT TO PREVENT ELECTROCUTION EVENTS AND POWER OUTAGES.

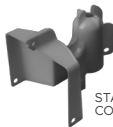
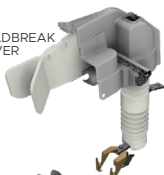
  
V-0  
FLAME  
RETARDANT

  
VERY  
HOTSTICK  
FRIENDLY

  
RATED AT  
≤ 35 KV  
INSULATION

## ADJUSTS TO FIT

LOADBREAK  
COVER



STANDARD  
COVER



RAPTOR CLAW™  
LOCK FOR  
LOADBREAK



NECK CLIP  
FOR STANDARD  
COVER

ONLY ADJUSTABLE COVER IN THE INDUSTRY

> STANDARD COVER FITS MOST 100 AND 200 AMP STANDARD CUTOUTS

> LOADBREAK COVER FITS ABB, HUBBLE-CHANCE, ALUMA-FORM, MACLEAN STYLE LOADBREAK CUTOUTS

NECK ADJUSTS TO THE SIZE OF THE CUTOUT FOR A TIGHT AND SECURE UNIVERSAL FIT

FULLY COVERS ALL ENERGIZED PORTIONS

ALLOWS INSULATOR SHEDS TO NATURALLY CLEAN

OPEN DESIGN ALLOWS FOR EASY ACCESS DURING INSPECTIONS

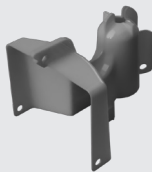
STANDARD COVER ALLOWS FOR LOADBREAK TOOL ACCESS

EASIEST HOTSTICK INSTALL IN THE INDUSTRY - NO LOCKING PINS

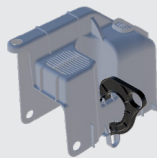
VIDEOS +  
MORE







UNIVERSAL  
CUTOOUT COVER  
CT-D02



UNIVERSAL  
LOADBREAK CUTOOUT COVER  
CT-D04

SKU	FIT	SHED DIAMETER	QTY
CT-D02	FITS MOST 100 AND 200 AMP STANDARD DISTRIBUTION CUTOOUTS	FITS STINGER SIZES #6-4/0 WITH INSULATING LINE HOSE	20
CT-D04	ABB, HUBBELL-CHANCE, ALUMA-FORM, MACLEAN STYLE LOAD-BREAK CUTOOUTS	≤ 5" / 12.7 CM	20

TESTS	RESULTS
IEEE 1656 / 5.2 WET WITHSTAND	>18 KV
IEEE 1656 / 5.3 WET POWER FREQUENCY FLASHOVER	>95%
IEEE 1656 / 5.4 LIGHTNING IMPULSE WITHSTAND	125KV
IEEE 1656 / 5.5 COLD TEMPERATURE TEST	PASSED / -25C
IEEE 1656 / 5.6 ULTRAVIOLET AGING	5,000 HOURS
WIND RETENTION	>90 MPH
UL 94 FLAMMABILITY OF PLASTIC MATERIALS	V-0
PROPERTIES	RESULTS
ASTM D149 DIELECTRIC STRENGTH	467 V/MIL (18.4 KV/MM)
ASTM D2303 INCLINED PLANE TRACKING AND EROSION: INITIAL TRACKING (VARIABLE VOLTAGE)	4.0 KV
ASTM D638 TENSILE STRENGTH @ YIELD	2,400 PSI (17 MPA)
ASTM D790 FLEXURAL MODULUS	140,000 PSI (966 MPA)
REGULATORY	ROHS COMPLIANT


# FLEXIBLE SLEEVE INSULATOR COVERS



**INSULATOR COVERS PROTECT INSULATORS AND THE CONDUCTOR.**

  
**V-0  
FLAME  
RETARDANT**

  
**VERY  
HOTSTICK  
FRIENDLY**

  
**RATED AT  
≤ 35 KV  
INSULATION**

**ONLY FLEXIBLE SLEEVE COVER IN THE INDUSTRY**



SLEEVES EASILY WRAP AROUND ANY BENDS OR CHANGES IN HEIGHT WITHOUT GAPS

ARRIVES IN 1 PIECE - NO NEED FOR ASSEMBLY ON SITE, NO CHANCE FOR SLEEVE SEPARATION

SNAP-FITS INTO POSITION

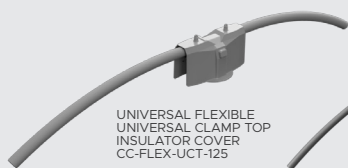
72" MINIMUM COVERAGE (EXCEEDS 60" MIN REQUIREMENT) FOR SUPERIOR COVERAGE

COVERS ENERGIZED PORTION OF THE INSULATOR, ALLOWING SHEDS TO NATURALLY CLEAN AND BE EASILY VIEWED DURING INSPECTIONS

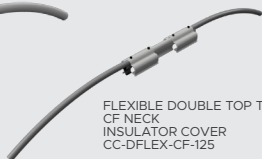
OPTIONS TO FIT ALL INSULATOR STYLES

VIDEOS +  
MORE





UNIVERSAL FLEXIBLE  
UNIVERSAL CLAMP TOP  
INSULATOR COVER  
CC-FLEX-UCT-125



FLEXIBLE DOUBLE TOP TIE  
CF NECK  
INSULATOR COVER  
CC-DFLEX-CF-125

## INSULATOR NECK/CAP OPTIONS



SKU	TYPE	LENGTH	I.D.	INSULATOR	KV RATING
CC-DFLEX-CF-100	CF	80" / 2.03 M	1" / 2.54 CM	DOUBLE ANSI 55-3, 55-4, 55-5, 55-6, 55-7	35 5
CC-DFLEX-CF-125	CF	80" / 2.03 M	1 1/4" / 3.17 CM	DOUBLE ANSI 55-3, 55-4, 55-5, 55-6, 55-7	35 4
CC-DFLEX-JK-100	JK	80" / 2.03 M	1" / 2.54 CM	DOUBLE ANSI 55-3, 55-4, 55-5, 55-6, 55-7	35 5
CC-DFLEX-JK-125	JK	80" / 2.03 M	1 1/4" / 3.17 CM	DOUBLE ANSI 55-3, 55-4, 55-5, 55-6, 55-7	35 4
CC-DFLEX-TR-100	TRUNNION	80" / 2.03 M	1" / 2.54 CM	TRUNNION	44 5
CC-DSTFLEX-CF-100	CF	80" / 2.03 M	1" / 2.54 CM	DOUBLE SIDE TIE ANSI 55-3, 55-4, 55-5, 55-6, 55-7	35 5
CC-DSTFLEX-CF-125	CF	80" / 2.03 M	1 1/4" / 3.17 CM	DOUBLE SIDE TIE ANSI 55-3, 55-4, 55-5, 55-6, 55-7	35 4
CC-STFLEX-CF-100	CF	80" / 2.03 M	1" / 2.54 CM	ANSI 55-3, 55-4, 55-5, 55-6, 55-7	35 10
CC-STFLEX-CF-125	CF	80" / 2.03 M	1 1/4" / 3.17 CM	ANSI 55-3, 55-4, 55-5, 55-6, 55-7	35 8
CC-FLEX-CF-100	CF	80" / 2.03 M	1" / 2.54 CM	ANSI 55-3, 55-4, 55-5, 55-6, 55-7	35 10
CC-FLEX-CF-125	CF	80" / 2.03 M	1 1/4" / 3.17 CM	ANSI 55-3, 55-4, 55-5, 55-6, 55-7	35 8
CC-FLEX-JK-100	JK	80" / 2.03 M	1" / 2.54 CM	ANSI 55-3, 55-4, 55-5, 55-6, 55-7	35 10
CC-FLEX-JK-125	JK	80" / 2.03 M	1 1/4" / 3.17 CM	ANSI 55-3, 55-4, 55-5, 55-6, 55-7	35 8
CC-FLEX-TR-100	TRUNNION	80" / 2.03 M	1" / 2.54 CM	TRUNNION	44 10
CC-FLEX-TR-125	TRUNNION	80" / 2.03 M	1 1/4" / 3.17 CM	TRUNNION	44 10
CC-FLEX-TR-125-69	TRUNNION	80" / 2.03 M	1 1/4" / 3.17 CM	TRUNNION	69 10
CC-FLEX-UCT-125	CLAMP TOP	80" / 2.03 M	1 1/4" / 3.17 CM	BOLT ACTUATED TOP CLAMP	46 10
CC-FLEX-UVT-125	WISE TOP	80" / 2.03 M	1 1/4" / 3.17 CM	WISE TOP	35 10
CC-CF *	CF	-	-	ANSI 55-3, 55-4, 55-5, 55-6, 55-7	35 25
CC-JK *	JK	-	-	ANSI 55-3, 55-4, 55-5, 55-6, 55-7	35 25

\* CAP WITH TWO RETENTION SLEEVES FOR INSTALLATION OVER LINE HOSE

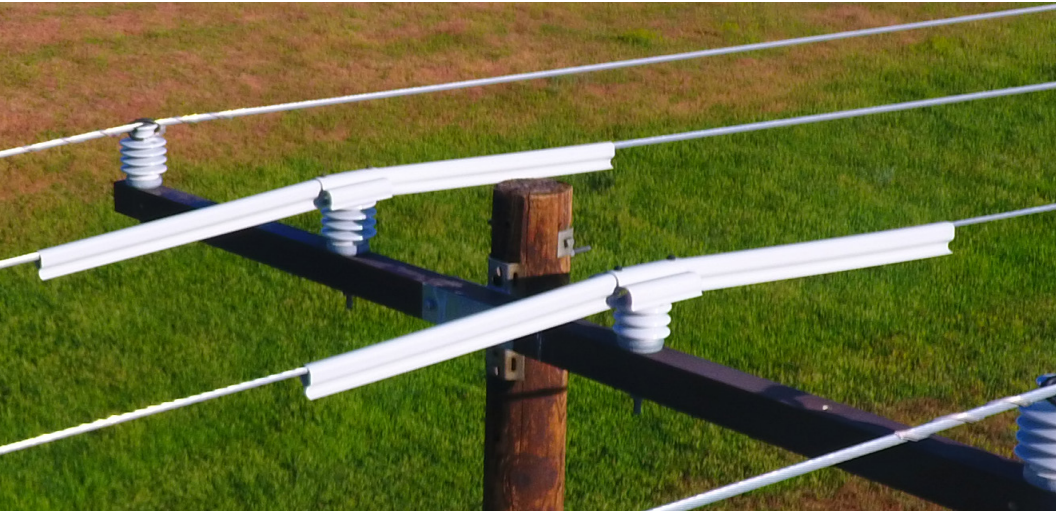
## TOOL

CC-FLEX-AT-K HOTSTICK COMPATIBLE INSTALLATION TOOL SET FOR ALL FLEXIBLE CONDUCTOR COVERS

\* USING TWO LHT-100-125 TOOLS ARE ALSO HOTSTICK INSTALLATION COMPATIBLE

TESTS	RESULTS
IEEE 1656 / 5.2 DRY WITHSTAND	>20 KV
IEEE 1656 / 5.6 ULTRAVIOLET AGING / ASTM G-155	1,000 HRS
ASTM D149 DIELECTRIC STRENGTH	938 V/MIL (36.9 KV/MM)
ASTM D 3638 COMPARATIVE TRACKING INDEX	526 V
ASTM D-638 / D-1822 ORIGINAL TENSILE IMPACT	56.7 FT LB/SQ IN
ASTM D-638/ D-1822 WEATHERED TENSILE STRENGTH	51.04 FT LB/SQ IN


# RIGID SLEEVE INSULATOR COVERS



INSULATOR COVERS PROTECT INSULATORS AND THE CONDUCTOR.

  
V-0  
FLAME  
RETARDANT

  
VERY  
HOTSTICK  
FRIENDLY

  
RATED FOR  
≤ 69 KV  
INSULATION

## DOUBLE TOP CAPS ADJUST TO FIT



SNAP-FITS INTO POSITION

72" MINIMUM COVERAGE (EXCEEDS 60" MIN REQUIREMENT) FOR SUPERIOR COVERAGE

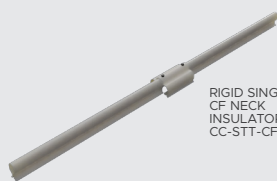
COVERS ENERGIZED PORTION OF THE INSULATOR, ALLOWING SHEDS TO NATURALLY CLEAN AND BE EASILY VIEWED DURING INSPECTIONS

OPTIONS TO FIT ALL INSULATOR STYLES

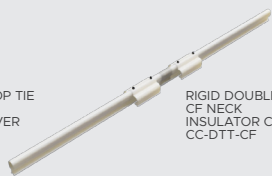
EASY HOTSTICK INSTALL - NO LOCKING PINS

VIDEOS +  
MORE





RIGID SINGLE TOP TIE  
CF NECK  
INSULATOR COVER  
CC-STT-CF



RIGID DOUBLE TOP TIE  
CF NECK  
INSULATOR COVER  
CC-DTT-CF

## INSULATOR NECK/CAP OPTIONS



C/F



J/K



TRUNNION



HOT STICK  
INSTALLATION TOOL  
CC-AT

SKU	TYPE	LENGTH	INSULATOR	KV RATING	QTY
CC-DST-CF	CF	80" / 2.03 M	DOUBLE SIDE TIE ANSI 55-3, 55-4, 55-5, 55-6, 55-7	35	5
CC-DST-JK	JK	80" / 2.03 M	DOUBLE SIDE TIE ANSI 55-3, 55-4, 55-5, 55-6, 55-7	35	5
CC-DTT-CF	CF	80" / 2.03 M	DOUBLE TOP TIE ANSI 55-3, 55-4, 55-5, 55-6, 55-7	35	5
CC-DTT-JK	JK	80" / 2.03 M	DOUBLE TOP TIE ANSI 55-3, 55-4, 55-5, 55-6, 55-7	35	5
CC-STT-CF	CF	80" / 2.03 M	SINGLE TOP TIE ANSI 55-3, 55-4, 55-5, 55-6, 55-7	35	10
CC-STT-CF-18	CF	42" / 1.07 M	SINGLE TOP TIE ANSI 55-3, 55-4, 55-5, 55-6, 55-7	35	25
CC-STT-JK	JK	80" / 2.03 M	SINGLE TOP TIE ANSI 55-3, 55-4, 55-5, 55-6, 55-7	35	10
CC-STT-JK-18	JK	42" / 1.07 M	SINGLE TOP TIE ANSI 55-3, 55-4, 55-5, 55-6, 55-7	35	25
CC-STT-TR	Trunnion	80" / 2.03 M	TRUNNION	38	10
CC-STT-TR-18	Trunnion	42" / 1.07 M	TRUNNION	38	10
CC-STT-TR-HD	Trunnion	80" / 2.03 M	TRUNNION	38	10
CC-CF *	CF	-	ANSI 55-3, 55-4, 55-5, 55-6, 55-7	35	25
CC-JK *	JK	-	ANSI 55-6, 56-1, 56-6, 56-7, 56-2, 56-3	35	25
CC-TR *	Trunnion	-	TRUNNION	69	10

\* CAP WITH TWO RETENTION SLEEVES FOR INSTALLATION OVER LINE HOSE

## TOOLS

CC-AT	Hotstick compatible installation tool for all standard sleeves
CC-AT-HD	Hotstick compatible installation tool for HD sleeve conductor cover CC-STT-TR-HD

## TESTS


## RESULTS

IEEE 1656 / 5.2 DRY WITHSTAND	>20 KV
IEEE 1656 / 5.6 ULTRAVIOLET AGING / ASTM G-155	1,000 HRS
ASTM D149 DIELECTRIC STRENGTH	938 V/MIL (36.9 KV/MM)
ASTM D 3638 COMPARATIVE TRACKING INDEX	526 V
ASTM D-638 / D-1822 ORIGINAL TENSILE IMPACT	56.7 FT LB/SQ IN
ASTM D -638/ D-1822 WEATHERED TENSILE STRENGTH	51.04 FT LB/SQ IN

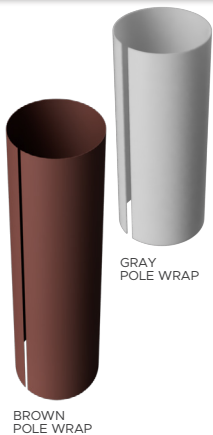
# SQUIRREL + WOODPECKER DETERRING POLE WRAP



**POLE WRAP IS A COST EFFECTIVE SOLUTION FOR DETERRING CLIMBING ANIMALS FROM INTERFERENCE WITH ENERGIZED CONNECTIONS AND EQUIPMENT.**

  
**RATED AT  
≤30 KV  
INSULATION**

## WIDEST COVERAGE IN THE INDUSTRY



SMOOTH, GLOSSY EXTERIOR DETERS CLIMBING ANIMALS ON POLES AND SUBSTATION FENCING

PREVENTS WOODPECKERS FROM LANDING/ATTACHING TO THE SURFACE AND CAUSING STRUCTURAL DAMAGE TO THE POLE

TEXTURED INTERIOR HELPS PREVENT ACCELERATED POLE ROT - ONLY ONE OF ITS KIND IN THE INDUSTRY

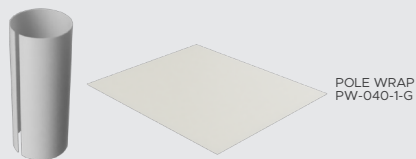
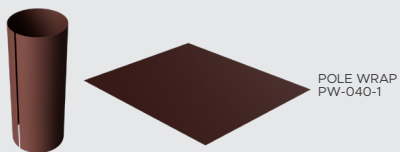
30" OF COVERAGE, CAN BE OVERLAPPED FOR EXTENDED COVERAGE

LINEMAN CLIMBABLE

NON CONDUCTIVE - PROVIDES ≤ 30KV INSULATION PER LAYER

VIDEOS +  
MORE





SKU	LENGTH	HEIGHT	PKG	COLOR	QTY
PW-040-1	100' / 2.54 M	30" / 76.2 CM	1 ROLL	BROWN	5
PW-040-1-2642	42" / 1.07 M	26" / 66.04 CM	20 SHEETS	BROWN	-
PW-040-1-3	36" / .91 M	30" / 76.2 CM	20 SHEETS	BROWN	-
PW-040-1-G	100' / 2.54 M	30" / 76.2 CM	1 ROLL	GRAY	5
PW-040-1-3-G	36" / .91 M	30" / 76.2 CM	20 SHEETS	GRAY	-

**TESTS****RESULTS**

ASTM D-149 DIELECTRIC STRENGTH

&gt;30KV @ .040"

ASTM D1822 TENSILE IMPACT

&gt;200 FT-LB/IN

ASTM D746 LOW TEMPERATURE BRITTLENESS

&lt;-76C

ASTM D1693 ENVIRONMENTAL STRESS CRACK RESISTANCE

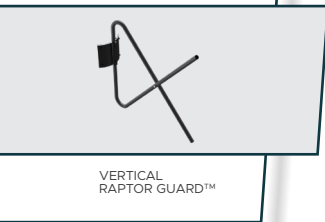
&gt;1,000 HRS



# RAPTOR GUARD™ “X” PERCHING DETERRENENTS



PREVENTING OUTAGES ON DISTRIBUTION POLES REQUIRES BLOCKING THE AIR GAP AND THE POTENTIAL OF BOTH PHASE-TO-GROUND AND PHASE-TO-PHASE CONTACT.



“X” SHAPE ISOLATES ENERGIZED DANGER ZONES AND BLOCKS AIR GAPS

BLOCKS BOTH PHASE-TO-GROUND AND PHASE-TO-PHASE CONTACT

“X” DETERS PERCHING, AS PROVEN BY LIVE FLIGHT CAGE RAPTOR TESTS CONDUCTED IN COLLABORATION WITH THE ROCKY MOUNTAIN RAPTOR PROGRAM

HOTSTICK OPTION AVAILABLE

VIDEOS +  
MORE







## BASE OPTIONS



SKU	COVERAGE	MOUNT TYPE	QTY
RGFL-12	22" / 55.88 CM	FLAT MOUNT	25
RGSO-12	22" / 55.88 CM	3 3/4" / 9.56 CM CROSS ARM - SLIP ON	25
RGHS-12	22" / 55.88 CM	3 3/4" / 9.56 CM CROSS ARM - HOTSTICK	25
RGAN-12	22" / 55.88 CM	ANGLE IRON	25
RGFL-16	26" / 66.04 CM	FLAT MOUNT	25
RGSO-16	26" / 66.04 CM	3 3/4" / 9.56 CM CROSS ARM - SLIP ON	25
RGHS-16	26" / 66.04 CM	3 3/4" / 9.56 CM CROSS ARM - HOTSTICK	25
RGFL-24	34" / 88.36 CM	FLAT MOUNT	20
RGSO-24	34" / 88.36 CM	3 3/4" / 9.56 CM CROSS ARM - SLIP ON	25
RGVT-24	34" / 88.36 CM	VERTICAL POLE MOUNT	20
RGVT-24-W	34" / 88.36 CM	VERTICAL POLE MOUNT	20
RGHS-24	34" / 88.36 CM	3 3/4" / 9.56 CM CROSS ARM - HOTSTICK	20
RGAN-24	34" / 88.36 CM	ANGLE IRON	20
RGFL-36	46" / 116.84 CM	FLAT MOUNT	20
RGSO-36	46" / 116.84 CM	3 3/4" / 9.56 CM CROSS ARM - SLIP ON	20
RGEX	+10" / 25.4 CM	EXTENSION FOR RGSO-36	50
RGPT	POLE TOP	VERTICAL POLE MOUNT WITH POLE MOUNT INSULATORS	35
RGPT-2	POLE TOP	VERTICAL POLE MOUNT WITHOUT POLE MOUNT INSULATORS	35

## TESTS

## RESULTS

UL 651	WEATHER RESISTANT
ASTM D635 FLAMMABILITY	SELF EXTINGUISHING
UL 94 FLAMMABILITY	V-0
ASTM D149 DIELECTRIC CONSTANT	544V/MIL

# RAPTOR GUARD™ SPIKE PERCHING EXCLUDERS



**PERCHING EXCLUDERS ON TRANSMISSION STRUCTURES ISOLATE DANGEROUS ENERGIZED AREAS AND DETER BIRDS OF PREY FROM USING STRUCTURES AS HUNTING PERCHES.**



STANDARD SPIKES

BLUNT-TIPPED SOLID FIBERGLASS SPIKES DETER PERCHING, AS PROVEN BY LIVE FLIGHT CAGE RAPTOR TESTS CONDUCTED IN COLLABORATION WITH THE ROCKY MOUNTAIN RAPTOR PROGRAM

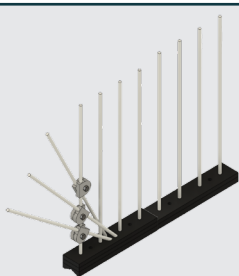
ENGINEERED TO MAINTAIN STRUCTURAL INTEGRITY UNDER EXTREME ENVIRONMENTAL CONDITIONS FOR DECADES

DURABILITY AND EFFECTIVENESS HAVE BEEN HIGHLIGHTED IN PILOT PROGRAMS BY THE WASHINGTON STATE FISH AND WILDLIFE AND THE BUREAU OF LAND MANAGEMENT

OPTIONAL SIDE EXTENSION COVERS VERTICAL INSULATORS OR ENDS OF CROSS ARM

MODULAR DESIGN ALLOWS FOR CUSTOM LENGTHS

HOTSTICK OPTION AVAILABLE



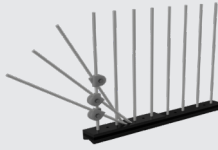
SPIKES WITH EXTRA COVERAGE

VIDEOS + MORE





RAPTOR GUARD™  
STANDARD SPIKES  
RGSP-24



RAPTOR GUARD™  
SPIKES WITH  
EXTRA COVERAGE  
RGSP-24-EC

## BASE OPTIONS



FLAT

ANGLE  
IRONDAVIT  
ARM

SKU	LENGTH	MOUNT TYPE	QTY
RGSP-12-EC *	12" / 30.48 CM	CROSS ARM	10
RGSP-24	24" / 60.96 CM	CROSS ARM	20
RGSP-24-AN	24" / 60.96 CM	ANGLE IRON	20
RGSP-24-EC *	24" / 60.96 CM	CROSS ARM	10
RGSP-24A	24" / 60.96 CM	DAVIT ARM	20
RGSP-24A-EC *	24" / 60.96 CM	DAVIT ARM	10
RGSP-36	36" / 91.44 CM	CROSS ARM	10
RGSP-36-AN	36" / 91.44 CM	ANGLE IRON	10
RGSP-36-EC *	36" / 91.44 CM	CROSS ARM	10
RGSP-36A	36" / 91.44 CM	DAVIT ARM	10
RGSP-36A-EC *	36" / 91.44 CM	DAVIT ARM	10
RGSP-48	48" / 121.92 CM	CROSS ARM	10
RGSP-48-AN	48" / 121.92 CM	ANGLE IRON	10
RGSP-48-EC *	48" / 121.92 CM	CROSS ARM	10
RGSP-48A	48" / 121.92 CM	DAVIT ARM	10
RGSP-48A-EC *	48" / 121.92 CM	DAVIT ARM	10

\* SPIKES WITH EC FEATURE ADDITIONAL SIDE SPIKE EXTENSION TO COVER VERTICAL INSULATORS OR ENDS OF ARM

TESTS	RESULTS
UL 746C OUTDOOR WEATHERABILITY	F1
UL-94 FLAMMABILITY	V-0 // 5VA @ .118" THICKNESS
ASTM D-256 IMPACT STRENGTH	23.0 FT-LB/IN
ASTM D695 FLEXURAL STRESS	3,810 PSI

# RAPTOR GUARD™ POLE TOP CAP



**POLE TOP CAPS ISOLATE DANGEROUS ENERGIZED AREAS AND DETER BIRDS OF PREY FROM USING STRUCTURES AS HUNTING PERCHES.**



BLUNT-TIPPED SPIKE DETERS PERCHING, AS PROVEN BY LIVE FLIGHT CAGE RAPTOR TESTS CONDUCTED IN COLLABORATION WITH THE ROCKY MOUNTAIN RAPTOR PROGRAM

FLUSH MOUNTING PROTECTS THE POLE TOP FROM WEATHERING DETERIORATION, PERCHING, AND NESTING ACTIVITY

ENGINEERED TO MAINTAIN STRUCTURAL INTEGRITY UNDER EXTREME ENVIRONMENTAL CONDITIONS FOR DECADES

DURABILITY AND EFFECTIVENESS HAVE BEEN HIGHLIGHTED IN PILOT PROGRAMS BY THE WASHINGTON STATE FISH AND WILDLIFE AND THE BUREAU OF LAND MANAGEMENT

CAN BE INSTALLED ON WOOD, STEEL, OR COMPOSITE

DISTRIBUTION  
POLE TOP CAPS

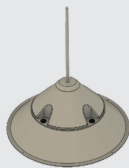


TRANSMISSION  
STRUCTURE  
POLE TOP CAPS



VIDEOS +  
MORE





RAPTOR GUARD™  
POLE TOP CAP  
RGPT-26



RAPTOR GUARD™ POLE TOP CAP KIT  
FOR BANDING TO POLES  
RGPT-K

SKU	DIAMETER	RECOMMENDED POLE TOP DIAMETER
RGPT-8	8" / 20.32 CM	7" - 9" / 17.78 CM - 22.86 CM
RGPT-10	10" / 25.4 CM	9" - 11" / 22.86 CM - 27.94 CM
RGPT-12	12" / 30.48 CM	11" - 13" / 27.94 CM - 33.02 CM
RGPT-14 *	14" / 35.56 CM	13" - 15" / 33.02 CM - 38.1 CM
RGPT-16 *	16" / 40.64 CM	15" - 17" / 38.1 CM - 43.18 CM
RGPT-18 *	18" / 45.72 CM	17" - 19" / 43.18 CM - 48.26 CM
RGPT-20 *	20" / 50.8 CM	19" - 21" / 48.26 CM - 53.34 CM
RGPT-22 *	22" / 55.88 CM	21" - 23" / 53.34 CM - 58.42 CM
RGPT-24 *	24" / 60.96 CM	23" - 25" / 58.42 CM - 63.5 CM
RGPT-26 *	26" / 66.04 CM	25" - 27" / 63.5 CM - 68.58 CM
RGPT-28 *	28" / 71.12 CM	27" - 29" / 68.58 CM - 73.66 CM
RGPT-30 *	30" / 76.2 CM	29" - 31" / 73.66 CM - 78.74 CM
RGPT-32 *	32" / 81.28 CM	31" - 33" / 78.74 CM - 83.82 CM
RGPT-34 *	34" / 86.36 CM	33" - 35" / 83.82 CM - 88.9 CM
RGPT-36 *	36" / 91.44 CM	35" - 37" / 88.9 CM - 93.98 CM
RGPT-38 *	38" / 96.52 CM	37" - 39" / 93.98 CM - 99.06 CM
RGPT-40 *	40" / 101.6 CM	39" - 41" / 99.06 CM - 104.14 CM
RGPT-42 *	42" / 106.68 CM	41" - 43" / 104.14 CM - 109.22 CM
RGPT-K	ADAPTER KIT FOR BANDING TO NON-WOOD POLE	

\* INCLUDES ADAPTER KIT FOR BANDING TO NON-WOOD POLES

TESTS	RESULTS
ASTM D-638 TENSILE STRENGTH	70,000 PSI
ASTM D-695 COMPRESSIVE STRENGTH	20,000 PSI
ASTM D-149 DIELECTRIC STRENGTH	50KV/IN

# UNIVERSAL / ADJUSTABLE NEST DIVERTERS



BIRD NESTS ON ELECTRICAL STRUCTURES CAN CAUSE POWER OUTAGES, FIRES, AND AVIAN ELECTROCUTIONS, IT IS OPTIMAL TO PREVENT NESTING ACTIVITY BEFORE IT BEGINS.



## ADJUSTS TO FIT

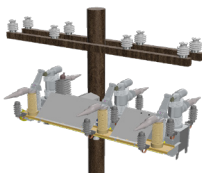


INVERTED "V" SHAPE DEFLECTS STICKS AND PREVENTS NESTING ABILITY - EVEN BY OSPREY AND EAGLES

EXTENDABLE DESIGN PROVIDES THE PERFECT FIT ON ALL CROSS ARM DESIGNS

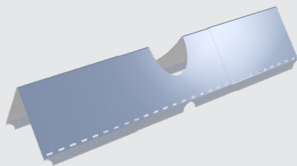
INDEPENDENT RESEARCH STUDY HAS DEMONSTRATED 100% EFFICACY RATE

OPTIONS FOR DISTRIBUTION STRUCTURES, TRANSMISSION STRUCTURES, AND INTELLIRUPTERS

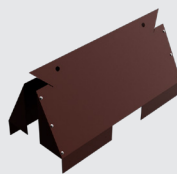


VIDEOS +  
MORE





ADJUSTABLE DOUBLE ARM  
DISTRIBUTION STRUCTURE  
NEST DIVERTER  
RGNS-24-43-V



H FRAME  
TRANSMISSION STRUCTURE  
NEST DIVERTER  
RGNS-40

SKU	COVERAGE	DESCRIPTION/STRUCTURE TYPE	QTY
RGNS-24	24" / 60.96 CM	H FRAME TRANSMISSION CENTER	10
RGNS-24-43	24" - 43" / 60.96 CM - 109.22 CM	UNIVERSAL FIT / DOUBLE CROSS ARM	6
RGNS-24-48S	24" - 48" / 60.96 CM - 121.92 CM	UNIVERSAL FIT / SINGLE CROSS ARM	6
RGNS-24-43-V	24" - 43" / 60.96 CM - 109.22 CM	UNIVERSAL FIT / DOUBLE CROSS ARM / V-0 MATERIAL	6
RGNS-24-48S-V	24" - 48" / 60.96 CM - 121.92 CM	UNIVERSAL FIT / SINGLE CROSS ARM / V-0 MATERIAL	6
RGNS-12	12" / 30.48 CM	DOUBLE CROSS ARM	10
RGNS-12-HD	12" / 30.48 CM	DOUBLE CROSS ARM	10
RGNS-36	36" / 91.44 CM	DOUBLE CROSS ARM	10
RGNS-36-1 *	36" / 91.44 CM	DOUBLE CROSS ARM	10
RGNS-36-K	36" / 91.44 CM	DOUBLE CROSS ARM	5
RGNS-36-K-SS **	36" / 91.44 CM	DOUBLE CROSS ARM / INCLUDES STRAPS	5
RGNS-36S	36" / 91.44 CM	SINGLE CROSS ARM	10
RGNS-36S-1 *	36" / 91.44 CM	SINGLE CROSS ARM	10
RGNS-40	40" / 101.6 CM	H FRAME TRANSMISSION MIDSECTION	10
RGNS-40-EC	40" / 101.6 CM	H FRAME TRANSMISSION END JUNCTION	10
RGNS-48	48" / 121.92 CM	DOUBLE CROSS ARM	10
RGNS-48-1 *	48" / 121.92 CM	DOUBLE CROSS ARM	10
RGNS-48-HD	48" / 121.92 CM	DOUBLE CROSS ARM	5
RGNS-48-HD-1 *	48" / 121.92 CM	DOUBLE CROSS ARM	5
RGNS-48-K	48" / 121.92 CM	DOUBLE CROSS ARM	5
RGNS-48-K-SS **	48" / 121.92 CM	DOUBLE CROSS ARM / INCLUDES STRAPS	5
RGNS-SCIR-01-K ***	37.5" + 20" / 95.25 CM + 50.8 CM	S&C INTELLIRUPTER CAT. # 248122, 248123, 248124	N/A

\* NEST DIVERTERS WITHOUT POLE CUT OUTS ARE DESIGNED FOR DOUBLE CROSS ARM STRUCTURES WITH ARMS MOUNTED 6" BELOW POLE TOP

\*\* INCLUDES SUPER STRAP BANDING FOR EASY INSTALLATION

\*\*\* ADDITIONAL MODELS AVAILABLE TO FIT NON DISCONNECT STYLES WITH OR WITHOUT SECONDARY TRANSFORMERS

TESTS // NON V-0 NEST DIVERTERS	RESULTS
ASTM G-154 / 4329 ACCELERATED WEATHER TESTING	REPORT COMING SOON - IN HOUSE
ASTM D-149 DIELECTRIC STRENGTH	>30KV @ .040"
PROPERTIES	RESULTS
ASTM D1822 TENSILE IMPACT	>200 FT-LB/IN
ASTM D746 LOW TEMPERATURE BRITTLNESS	<-76C
ASTM D1693 ENVIRONMENTAL STRESS CRACK RESISTANCE	>1,000 HRS
TESTS // V-0 NEST DIVERTERS	RESULTS
ASTM D-149 DIELECTRIC STRENGTH	>50KV
ASTM D-638 COMPARATIVE TRACKING	>500V
ASTM G-26 ACCELERATED WEATHER TESTING	>1000 HRS
UL 746C OUTDOOR WEATHERABILITY	F1
PROPERTIES	RESULTS
UL-94 FLAMMABILITY	V-0 / 5VA

# NEST PLATFORM



**IDEAL FOR EAGLE AND OSPREY NESTS, LARGE AND STRONG NESTING PLATFORMS PROVIDE A SAFE ZONE FOR MULTIPLE GENERATIONS.**



750+ LBS CAPACITY FOR NESTING MATERIALS

IDEAL FOR EAGLES AND OSPREY NESTING ACTIVITY FOR MULTIPLE GENERATIONS - BUILT FOR LONGEVITY

GRATES ALLOW WATER TO DRAIN

MOUNTING OPTIONS FOR POLES AND CROSS ARMS

GLASS FIBER REINFORCED POLYESTER FOR:

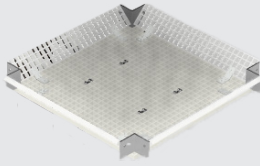
- > UV RESISTANCE
- > CORROSION RESISTANCE
- > FIRE RESISTANCE
- > HIGH DI-ELECTRIC STRENGTH

FOR BEST RESULTS USE IN COMBINATION WITH NEST DIVERTERS

VIDEOS +  
MORE







NEST PLATFORM  
RGNP-42



NEST PLATFORM  
WITH ATTACHMENT KIT  
RGNP-42-A

SKU	DIMENSIONS	STRUCTURE TYPE
RGNP-42	42" L x 42" W x 6" H / 106.68 CM L x 106.68 CM W x 15.24 CM H	NEST PLATFORM ONLY // FOR DOUBLE CROSS ARM INSTALLATION
RGNP-42-A	42" L x 42" W x 6" H / 106.68 CM L x 106.68 CM W x 15.24 CM H	NEST PLATFORM WITH ATTACHMENT KIT FOR 6" - 12" / 15.24 CM - 30.48 CM DIAMETER POLES

\* FOR LARGER DIAMETER POLES PLEASE CONTACT US

TESTS	RESULTS
ASTM E84-19B // STANDARD TEST METHOD FOR SURFACE BURNING CHARACTERISTICS OF BUILDING MATERIALS	CLASS A
ASTM D-149 DIELECTRIC BREAKDOWN VOLTAGE AND STRENGTH	PASSED / 24 KV
PHYSICAL LOAD TESTING (RGNP-42-A)	PASSED / 750 LBS
ASTM G-154-12A CYCLE 1 / ASTM D26-16-12 // UV AGING	>1000 HRS

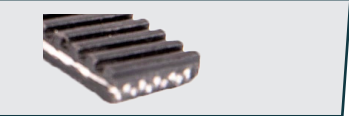
# SUPER STRAP POLYMER BANDING



**NON CONDUCTIVE BANDING IS DESIGNED TO BE LINEMAN SAFE, AND WHEN INTEGRATED WITH NYLON FILAMENTS IT IS ALSO DURABLE AND STRONG.**



- 100% POLYMER NON-CONDUCTIVE BANDING
- INTEGRATED NYLON FILAMENTS ENHANCE STRENGTH
- 3/4" STRAP HOLDS  $\geq$  1,180 LBS. PER BAND
- UV-RESISTANT POLYMER IS LIGHTWEIGHT AND DURABLE
- POLYMER ELIMINATES RISK OF DISSIMILAR METAL CAUSED CORROSION FAILURES
- QUICK-ATTACH, TAMPER-PROOF BUCKLES



NYLON FILAMENT  
INTEGRATION

VIDEOS +  
MORE





SUPER STRAP  
BANDING  
ASSEMBLED



SUPER STRAP  
BANDING ROLL  
SSB-BA-3/4-98



SUPER STRAP  
BUCKLE  
SSB-BU-3/4



SUPER STRAP  
TOOL  
SSB-AT-3/4

SKU	LENGTH
SSB-BA-3/4-98	98' L x 3/4" W / 29.87 M L x 1.91 CM W
SSB-BA-3/4-196	98" L x 3/4" W / 59.74 M L x 1.91 CM W
SSB-BU-3/4	BUCKLE FOR SSB-BA-3/4-98 AND SSB-BA-3/4-196
SSB-AT-3/4	TIGHTENING TOOL FOR SSB-BA-3/4-98 AND SSB-BA-3/4-196

TESTS	RESULTS
UL-94 FLAMMABILITY	HB
IEEE 1656 / 5.6 ULTRAVIOLET AGING / ASTM G-155	PASSED
ISO 4892-2 / WEATHERED TENSILE STRENGTH	PASSED



**970.599.1050**

**SALES@POWERLINEENTRY.COM**

**8950 PIEPER ROAD // WELLINGTON, COLORADO**

